



Ward
6

AREA PROFILE

Community
Planning



Introduction to Area Profile

This Area Profile has been produced by the Performance and Community Engagement division within Services for Communities at the City of Edinburgh Council.

We are interested in hearing your comments and feedback on the profiles so please contact either:

- Pam Lambert (pam.lambert@edinburgh.gov.uk),
- Justin Ward (justin.ward@edinburgh.gov.uk)
- Daniel Sawyers (daniel.sawyers@edinburgh.gov.uk).

The profiles have been based around the Scottish Indices of Multiple Deprivation (SIMD) and updates to the profiles will be in line with the publication of the new SIMD data and other appropriate information from partner organisations as it becomes available.

Thank you

Angela Leitch
Head of Performance and Community Engagement
Services for Communities

Corstorphine and Murrayfield – Overview of Statistical Data

Corstorphine and Murrayfield ward lies to the west of the city centre. The ward includes the residential areas of Corstorphine, Carrick Knowe, Saughtonhall, Murrayfield, Roseburn and Ravelston. Murrayfield Stadium, Edinburgh Zoo and Murrayfield and Carrick Knowe golf courses are in this ward.

Employment

Corstorphine and Murrayfield has a lower rate of people excluded from the world of work. Compared to the rest of Scotland, there is a lower proportion of the working age population who are unemployed or are not involved in the labour market due to ill health or disability.

Ward significantly above average compared to the rest of Scotland

Housing

Overall Corstorphine and Murrayfield has good measures of material living standards with a lower number of persons in households which are over-crowded or without central heating.

Ward above average compared to the rest of Scotland

Health

The people within Corstorphine and Murrayfield are healthier than the average – that is that there is a lower level of risk associated with poor health (i.e. admission rates for alcohol or drug taking or prescriptions for anxiety, depression or psychosis).

Ward above average compared to the rest of Scotland

Crime

Local neighbourhoods within Corstorphine and Murrayfield experience crime levels that are lower than the Scottish average. This is based on types of crime that affect a local neighbourhood: crimes of violence; drug offences; domestic house breaking; minor assault; and vandalism.

Ward above average compared to the rest of Scotland

Education, Skills and Training

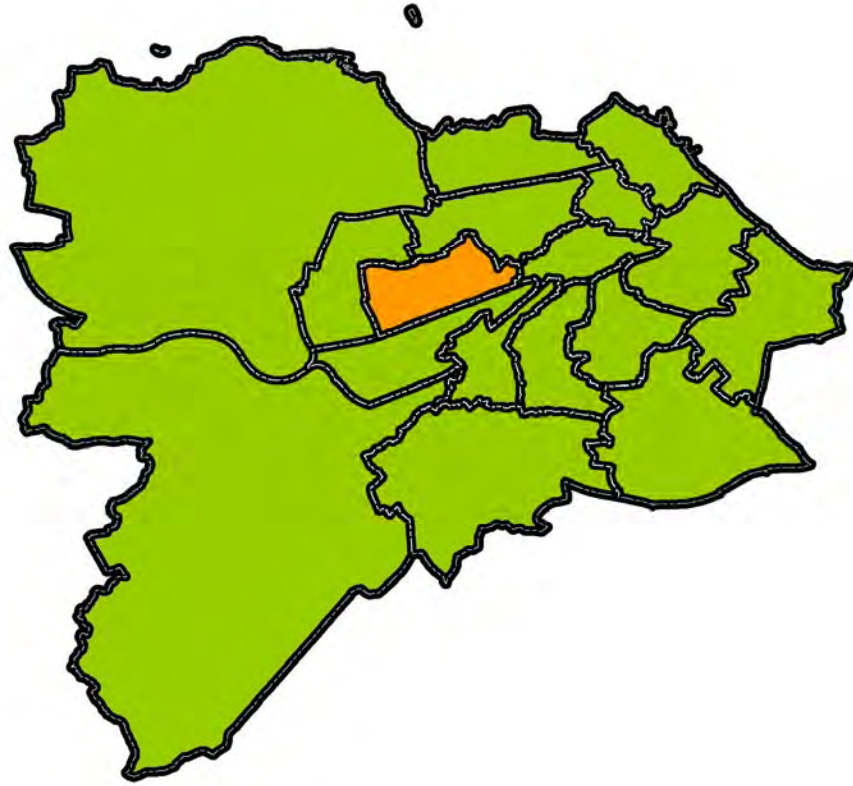
Focusing on low educational achievement as both an outcome and a cause of poverty and deprivation, compared to the rest of Scotland Corstorphine and Murrayfield has higher levels of people within education, moving into further education, and performing well at school.

Ward significantly above average compared to the rest of Scotland

AREA PROFILE

Community
Planning

CORSTORPHINE/MURRAYFIELD WARD



CORSTORPHINE/ MURRAYFIELD WARD

Ward
06

Population: 22,943
Unemployment Rate: 1.8%
No qualifications: 18.1%
Good/fair Health: 93.9%

Household Tenure:

- Owner Occupied: 86.6%
- Council: 2.3%
- Other social: 2.0%
- Private Landlord: 7.5%
- Living rent free: 1.6%

(CENSUS, 2001)

Area Profile: **Corstorphine/Murrayfield**

AREA PROFILING

“This area profile brings together a number of components to help map the quality of life and services in a local area. It can provide a valuable resource for neighbourhood managers and neighbourhood partnerships to address the issues that matter in their locality”



The profiles use the Scottish Indices of Multiple Deprivation (SIMD) – the Scottish Executive’s official tool for identifying small area concentrations of multiple deprivation across Scotland. This has been selected as it is relevant to policies aimed at tackling the causes and effects of area based multiple deprivation.

For a detailed explanation of SIMD and guidance on how to use the SIMD data please see the last page of this report.

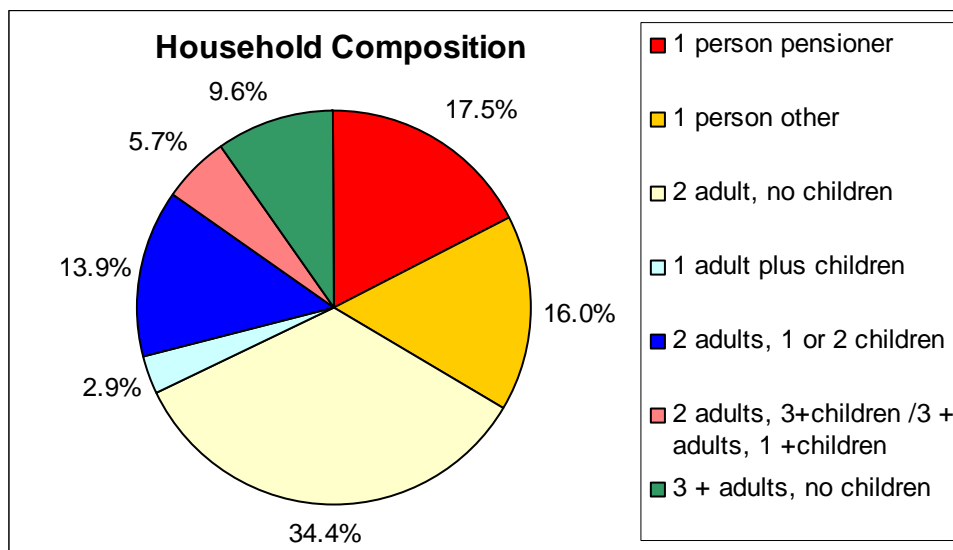


PEOPLE AND PLACE

Population dynamics

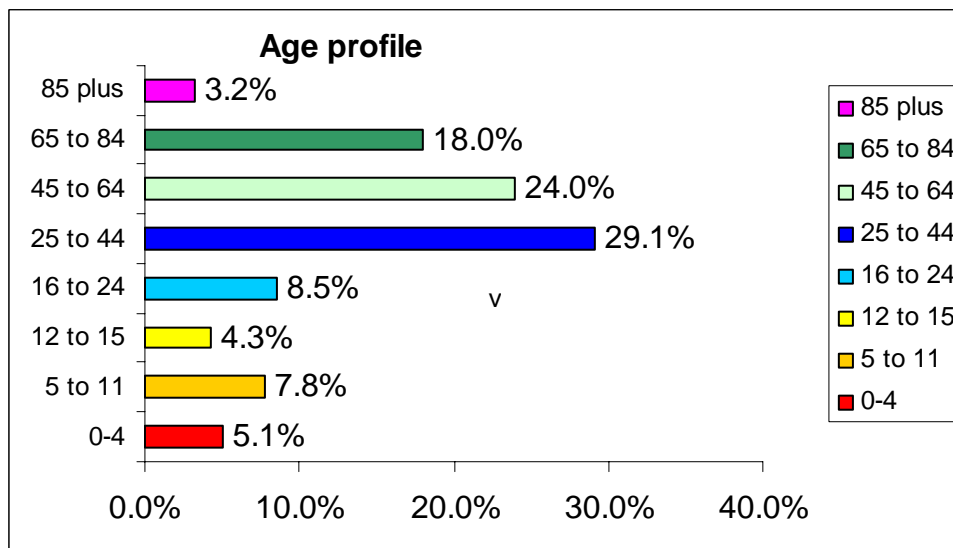
Total Population – 22,943

Density (persons/ha) – 30.1



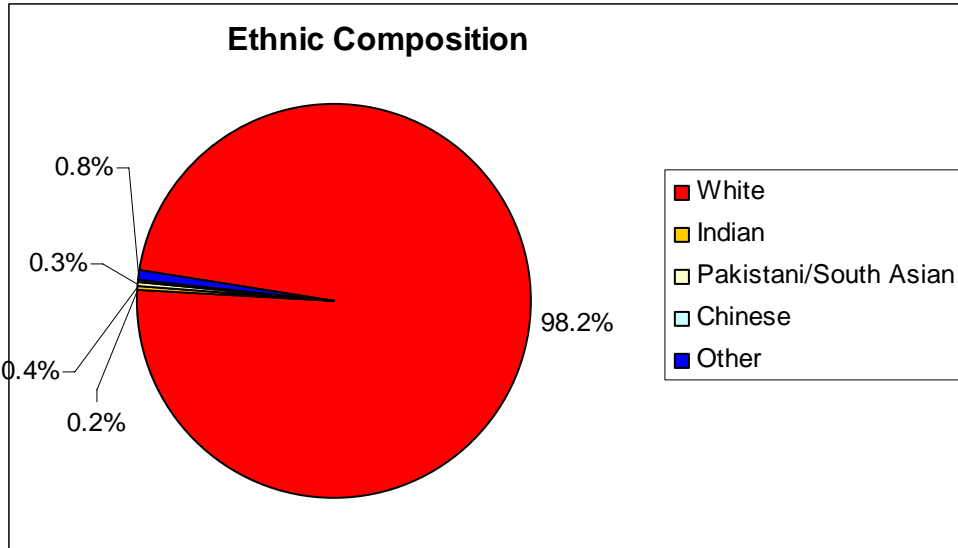
For census information please see:

<http://www.scrol.gov.uk/scrol/common/home.jsp>



<http://www.scrol.gov.uk/scrol/common/home.jsp>

Area Profile: **Corstorphine/Murrayfield**

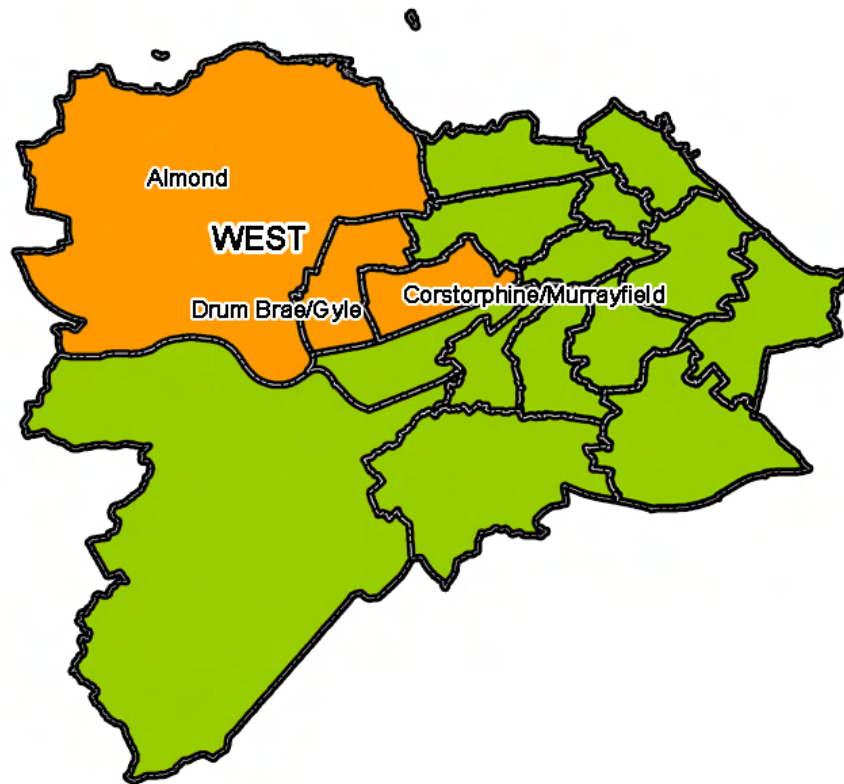


<http://www.scrol.gov.uk/scrol/common/home.jsp>



COMMUNITY INVOLVEMENT AND COHESION

The Corstorphine/Murrayfield is part of the West Community Planning Area (CPA) that includes Drum Brae/Gyle and Almond.



For a list of the voluntary and community groups please see the following site that can be searched alphabetically, by postcode and by category:
http://www.edinburghcompact.org.uk/_localOrganisations/localOrganisations.asp



ECONOMIC WELL-BEING

The Scottish Indices of Deprivation 2006 show – high levels of overall well-being - in the Corstorphine/Murrayfield Ward. Most of the ward is within the best 10% of deprived areas in Scotland, the remainder of the ward is within 50-90% of deprived areas in Scotland.

The Corstorphine/Murrayfield Ward has an unemployment rate of 1.8% lower than the city-wide level at just under 3%.

Corstorphine/Murrayfield has lower rates of people who have Never Worked and Long-term Unemployed at 1.8% compared with 3.2% across Edinburgh and people who are permanently sick at 2.8% compared to 5% across Edinburgh. (Census, 2001)

Unemployment levels in 2006

The most recent unemployment data at the time of writing relates to December 2006 (City of Edinburgh Council). The closest 'fit' for unemployment data to the new multi-member Wards is the 58 old wards (this is unlikely to change in the short-term).

The old 58 wards do not always fit in neatly to the new 17 multi-member wards; but to address the difference in the significance to the overlap a ranking has been applied to the unemployment data for the new ward.

South East Corstorphine is completely subsumed within the new ward boundary and Murrayfield is almost completely within the new ward.

58 old Wards	Number unemployed	Unemployment Rate	Rank
Murrayfield **	41	0.8	49
NE Corstorphine **	40	0.9	44
SE Corstorphine *	48	1.0	41
Stenhouse **	122	2.7	16
EDINBURGH	6,592	2.2	

* Completely within the multi-member ward boundary

** - Significant overlap – this is a significant area in the new multi-member Ward

*** - Insignificant overlap – this is a relatively insignificant area in the new multi-member Wa



HOUSING

The Housing component that forms the overall Scottish Indices of Multiple Deprivation rankings takes account of overcrowding in households and households without central heating. Across the whole of Scotland, Leith and the City Centre are ranked in the worst 5% for the SIMD rankings – attributable to higher rates of overcrowding and households without central heating as recorded by the 2001 Census.

The Corstorphine/Murrayfield Ward ranks well in relation to the Housing component from SIMD, and as such, the overall Ward level census data presents a better picture than that of the city as a whole:

Area	Overcrowded households	Households without central heating
Edinburgh	14.2%	12.3%
Corstorphine/Murrayfield Ward	6.3%	7.6%

(Census, 2001)

2.3% of households in the Corstorphine/Murrayfield Ward rented their property from the City of Edinburgh Council, lower than the city-wide level of 10.9%.

Area	Owner occupied	Council	Other social	Private Landlord	Living Rent Free
Edinburgh	68.6%	10.9%	5.5%	12.5%	2.4%
Corstorphine/Murrayfield Ward	86.6%	2.3%	2.0%	7.5%	1.6%

(Census, 2001)

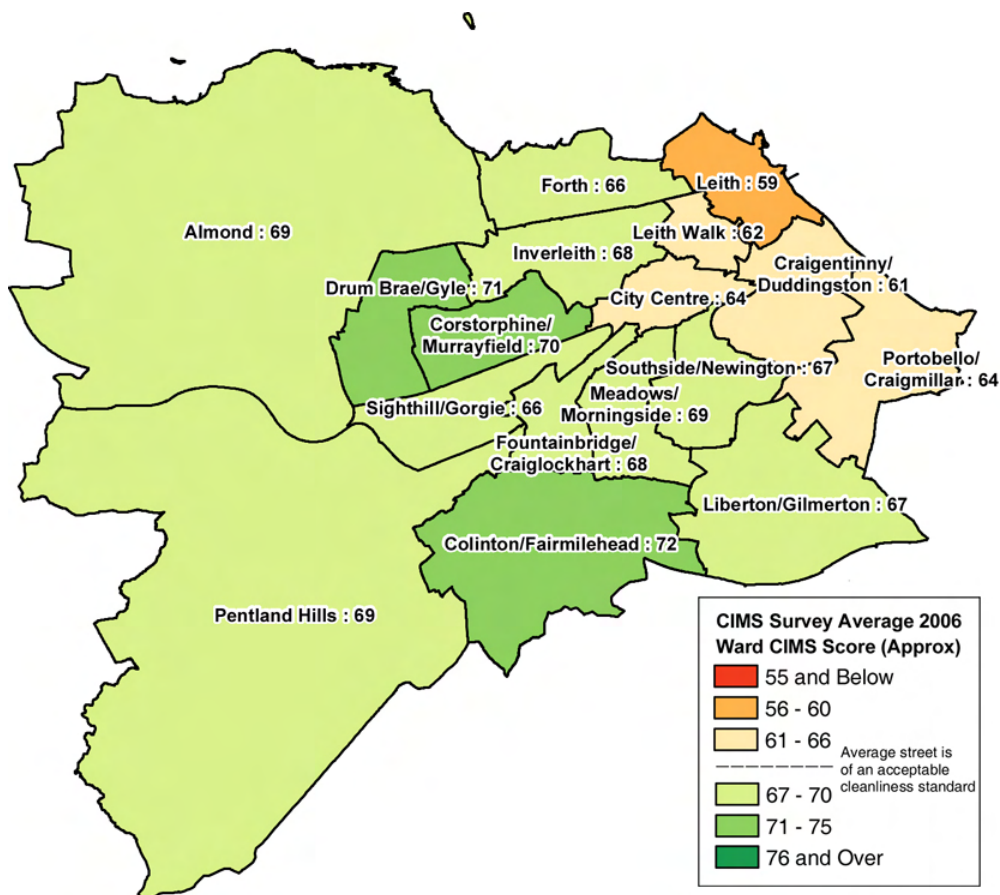
There are currently 187 council houses in the Corstorphine/Murrayfield Ward and 572 ex-council houses that have been sold to sitting tenants, the latter represents 75% of the original council stock. The proportion of empty houses in Corstorphine/Murrayfield is in line with the percentage of empty stock across the city which varies between 1%-3% (I world¹, December 2006).

¹ I World is the system used by Housing and Regeneration within Services for Communities at the City of Edinburgh Council.



ENVIRONMENT

The Cleanliness Index Monitoring System (CIMS) score is an objective measure of the cleanliness of Edinburgh's streets captured by a quarterly survey carried out by Keep Scotland Beautiful. Each surveyed street is given a score between 0 – 3 depending upon its cleanliness. The CIMS score is then a ratio between the achieved score and the best possible score for a ward. A score of 66 corresponds to a score that shows on average all surveyed streets were of an acceptable standard of cleanliness. The score on the map shown below is an average for the four surveys carried out in 2006 and aggregated approximately into the new ward geography based upon geographical areas, because of this approximation the data should be treated with caution.



The average city-wide score for the same period was 66.

Parks

There are a number of parks and green spaces within the ward, golf clubs, playing fields and the Edinburgh Zoo and Murrayfield Bupa Hospital. The research contained within the Parks & Gardens Strategy did not cover parks in this ward but focused on parks located within the city centre (Audience Business – Parks Review, 2002).

Area Profile: **Corstorphine/Murrayfield**



TRANSPORT AND ACCESS

Across Edinburgh, access to services¹ – petrol stations, primary schools, secondary schools, shopping facilities, post offices – is relatively good compared against the whole of Scotland. Compared to rural areas and small towns, one could expect that the capital city would be well connected to services.

Between 1999 and 2004 there was a significant increase in the proportion of journeys made by public transport by Edinburgh residents, with Lothian Buses plc, for example, carrying around 25% more passengers. The proportion of journeys on foot or by bicycle did not change significantly in this period, compared to a trend of falling numbers across Scotland. Looking specifically at travel to work, over of 50% of journeys by Edinburgh residents are made by public transport, walking or cycling. This is the highest rate in Scotland.

The total number of journeys by Edinburgh residents increased during this period, reflecting population growth, additional jobs in Edinburgh and increasing car ownership. The percentages indicated below are therefore percentages of an increasing total number of journeys.

%	Cycle	Walk	Public transport	Car (inc. passengers)	Other	Sample size
1999	2	24	16	57	2	2714
2004	2	23	19	54	3	1313

Increasing public transport patronage is closely linked with the increasing provision of bus priorities and consequent improvement in bus reliability.

Use of the new park & ride sites is increasing rapidly, with 75% of the 950 spaces at Ingliston and Hermiston occupied at peak times in September 2006. This is an excellent performance just one year after the sites opened in September 2005.

In the city centre, new traffic management arrangements have reduced traffic levels in the areas of greatest pedestrian activity, while 20mph zones in many residential areas have reduced the danger and domination of traffic.

¹ Access to services is aggregated for the Scottish Indices of Multiple Deprivation (SIMD) and further details of all the measures included can be found on the website <http://www.scotland.gov.uk/Publications/2006/10/13142913/0>



COMMUNITY SAFETY

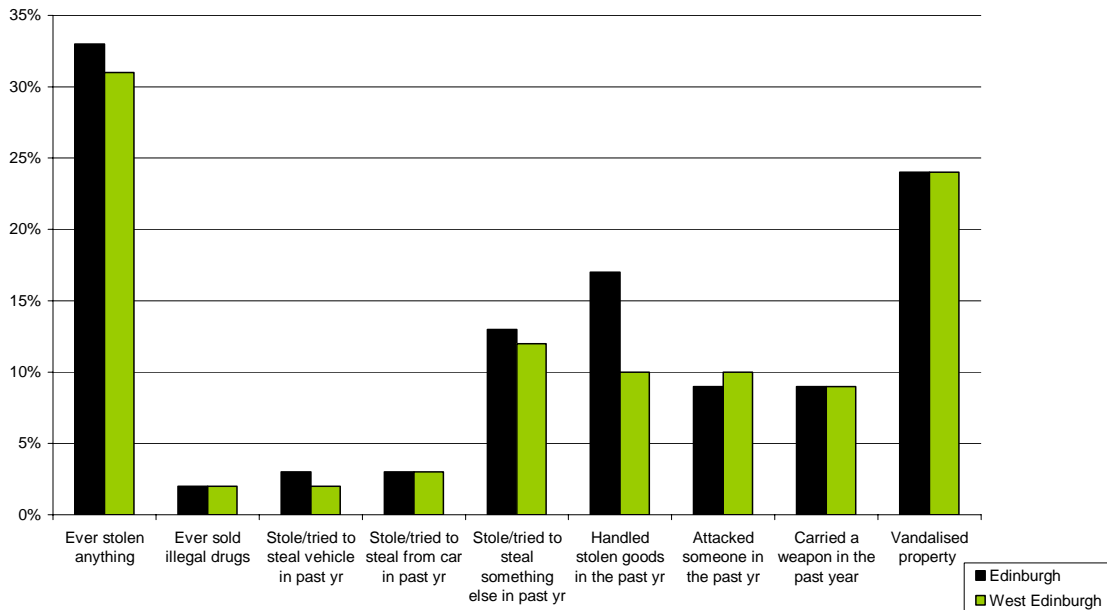
Communities that Care (CtC)³, survey results showed the following:

Young Peoples Perception of their Area

Perception of Area	National	Edinburgh	South West Edinburgh	North Edinburgh	West Edinburgh	South Edinburgh	East Edinburgh
Lots of fights in their neighbourhood	16%	18%	19%	23%	14%	15%	23%
Crime and/or drug selling	23%	19%	19%	23%	17%	17%	25%
Lots of empty/abandoned buildings	8%	6%	5%	9%	4%	5%	9%
Lots of graffiti	15%	18%	18%	23%	14%	16%	23%
I feel unsafe after dark	21%	20%	21%	22%	19%	17%	26%

Area Analysis – Youth Crime

West Edinburgh - Youth Crime and Antisocial Behaviour



³ Communities that Care developed and piloted a self-completion youth survey. In the period October 2005 – March 2006, 17,476 secondary school pupils (S1 to S5 only) who live and study in Edinburgh, were surveyed. Communities that Care is a long-term preventive programme which establishes a working partnership between local people, agencies and organisations to promote healthy personal and social development among young people, while reducing the risks of different problem behaviours. The survey is designed to provide information on the prevalence of risk and protective factors among young people aged 11-16, and also to assess the current prevalence of problem behaviours within a community.

Area Profile: **Corstorphine/Murrayfield**

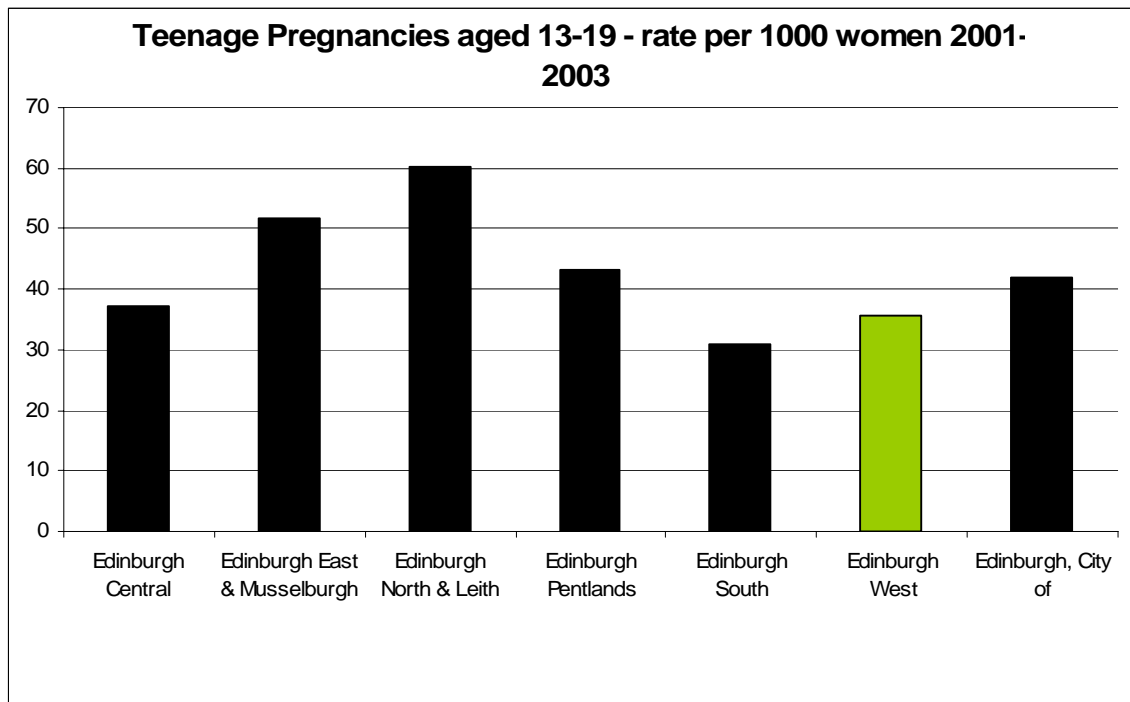


HEALTH AND WELL-BEING

Across Edinburgh, 9 out of 10 people are in good/fair health, Corstorphine/Murrayfield Ward is in line with the city-wide level.

15% of people in the Corstorphine/Murrayfield Ward have a limiting illness; lower than the city-wide level of 16.6%. (Census, 2001)

Data on teenage pregnancies is gathered to the lowest level of the Scottish Parliamentary Constituencies. The most recent data is presented below:



(Scottish Neighbourhood Statistics www.sns.gov.uk)



EDUCATION AND LIFE LONG LEARNING

18% of people in the Corstorphine/Murrayfield Ward have no qualifications – this is lower than the proportion of people across the whole of Edinburgh at 22.9%. For higher grade level the Corstorphine/Murrayfield Ward is close to the city-wide proportion at 17.6% compared to 18.6%.

The education, skills and training overall SIMD ranking, shows that the area ranks well in relation to these indicators compared with the rest of Scotland – this means that across a range of indicators – no qualifications, people between 16 - 18 not in full time education, pupils performance, absence from school – the Corstorphine/Murrayfield Ward shows relative well-being.

Libraries

There are two libraries within the area: Corstorphine/Murrayfield.

Item home site	PC Issues (2005/06)	No. of PCs	Av. Loans per PC.	Number of borrowers (2005/06)	No. of Guest PC Issues (2005/06)	Guest PC Issues as % of PC Issues (2005/06)	Total Members at (02/04/06)	Visitor Counts (2005/06)
Balgreen Library	2010	2	1005	357	249	12.4%	3,486	67,167
Corstorphine Library	8716	8	1090	1,041	660	7.6%	10,613	125,774

Schools

The following primary schools are in the area: Carrick Knowe; Corstorphine and Roseburn; Balgreen Primary School. Dalry Primary School is close by.

Primary School	Reading	Writing	Maths
Balgreen	61	45	45
Carrick Knowe	73	66	72
Corstorphine	91	73	76
Roseburn	82	67	94

(Source: <http://news.scotsman.com/topics.cfm?tid=1361&id=2241002005>)

Secondary schools within the area have the following profiles:

Secondary School	No. of pupils	Percentage authorised absences for 2005/06	Percentage unauthorised absences for 2005/06	Percentage of the S4 year group achieving five or more awards at SCQF Level 4 (Standard Grade General level or equivalent) or better	Staying on to S5
Edinburgh		6.5%	3.1%	74%	64%
Scotland		7.5%	1.8%	76%	64%
Forrester High School *	695	5.7%	3.3%	78%	52%
St Augustines RC High School *	778	7.5%	2.4%	83%	61%
Tynecastle High School *	721	7.2%	3.3%	59%	55%

(Source: <http://www.scottishschoolsonline.gov.uk/>)

* Schools that are outside the Ward boundary

NEET group

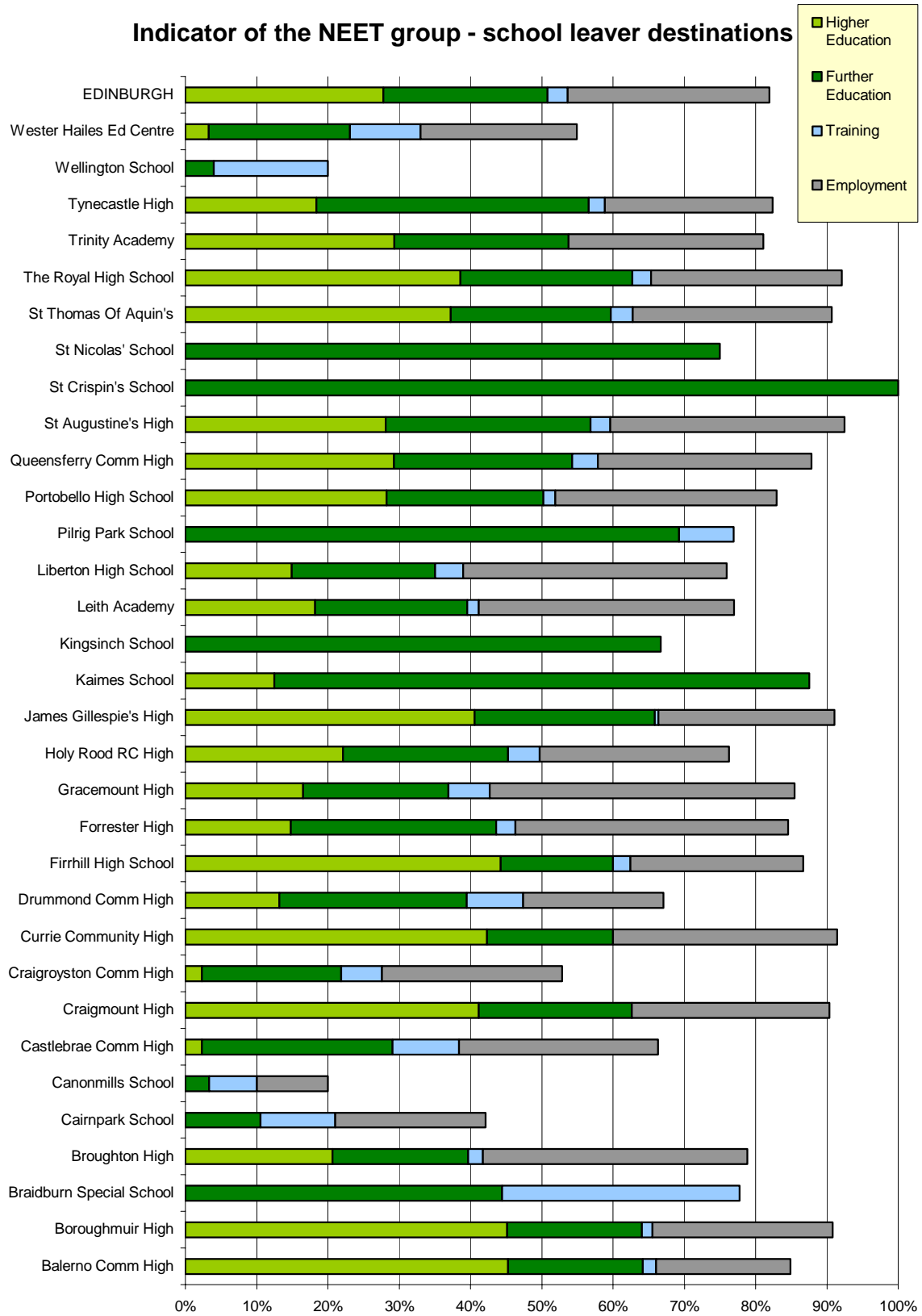
The table below is based on the School Leaver Destination survey and is the main set for the NEET (Not in Education, Employment or Training) group.

School	Unemployed Seeking	Unemployed Not Seeking	Not Known	Total Leavers
Forrester High	14%	1%	0%	149
St Augustine's High	8%	0%	0%	146
Tynecastle High	15%	2%	0%	136

As the graph below shows the % of school leavers in education, employment or training is as follows:

- Forrester has 85%
- St Augustine's High has 92%
- Tynecastle High has 83%

Indicator of the NEET group - school leaver destinations



Area Profile: **Corstorphine/Murrayfield**

Ward 6 - Corstorphine/Murrayfield Ward

Key statistics			Age Structure						Household Composition						
			Total		Male	Female	% Total	Edin %	H'holds		%	Edin %			
Total Population	22,943		0 to 4	1,166	577	589	5.1	4.9	Total households	10,303					
Males	10,575		5 to 11	1,788	882	906	7.8	7.2	1 Person: Pensioner	1,802	17.5	14.4			
Females	12,368		12 to 15	990	474	516	4.3	4.2	Other	1,644	16.0	23.1			
Households	10,303		16 to 24	1,950	925	1,025	8.5	14.4	2 adult, no children	3,549	34.4	30.4			
Persons in Households	22,579		25 to 44	6,686	3,202	3,484	29.1	32.2	1 adult plus children	300	2.9	4.5			
Persons in communal establishments	364		45 to 64	5,495	2,647	2,848	24.0	21.7	2 adults, 1 or 2 children	1,429	13.9	11.1			
Area (ha)	761		65 to 84	4,132	1,698	2,434	18.0	13.5	2 adults, 3+children /	588	5.7	5.3			
Density (persons/ha)	30.1		85 plus	736	170	566	3.2	1.9	3+ adults, 1+children	991 9.6 11.2					
			Total	22,943	10,575	12,368									
Household Tenure / Amenities				Household Size by number of rooms						Household Size by number of residents					
				H'holds		%	Edin %	H'holds		%	Edin %	H'holds		%	Edin %
Owner Occupied	8,923	86.6	68.6	All Households	10,303			All Households	10,303						
Rented:				1 room	31	0.3	1.1	1 Person	3,446	33.4	37.5				
Council	239	2.3	10.9	2 rooms	207	2.0	6.3	2 People	3,721	36.1	33.0				
Other social	205	2.0	5.5	3 to 4 rooms	4,492	43.6	48.7	3 to 4 People	2,693	26.1	24.8				
Private l'lord	772	7.5	12.5	5 to 6 rooms	3,597	34.9	31.7	5 or More People	443	4.3	4.8				
Living rent free*	164	1.6	2.4	7+ Rooms	1,976	19.2	12.3	Average Household Size	2.2	2.1					
H'holds without								Edin.							
Central Heating	780	7.6	12.3	Average number of rooms/hh	5	4.5			Overcrowded h'holds	650	6.3	14.2			
Bath / Shower	16	0.2	0.3	*May include some tenants whose rent is paid for by a third party											
Car Availability				Transport to Work / Study						Dwellings					
				H'holds		Edin	No.		%	Edin %	No.		%	Edin %	
Households	10,303		Households				Train	132	0.6	0.8	Dwellings	10,581			
% H'holds with:				Bus	3,573 15.6 16.7			Bus	3,573 15.6 16.7			H'hold Spaces	10,587		
0 Car	25.9	39.5		Taxi	70 0.3 0.4			Taxi	70 0.3 0.4			Vacant	224	2.1	4.1
1 Car	50.8	43.5		Car - drive	5,469 23.8 20.3			Car - drive	5,469 23.8 20.3			2nd Residence	60	0.6	0.7
2 Cars	20.2	14.5		Car - passenger	1,505 6.6 5.8			Car - passenger	1,505 6.6 5.8			Detached	1,614	15.2	11.2
3 Cars	2.6	1.9		Motorcycle	64 0.3 0.3			Motorcycle	64 0.3 0.3			Semi-detached	2,092	19.8	14.1
4 or more cars	0.6	0.5		Bicycle	308 1.3 1.9			Bicycle	308 1.3 1.9			Terraced	2,051	19.4	14.5
Total cars	10,456		Foot	3,110 13.6 18.3			Foot	3,110 13.6 18.3			Flats/tenement	4,818	45.5	60.1	
				Other	102 0.4 0.4			Other	102 0.4 0.4			Other	12	0.1	0.2
				Not travelling to work or study	8,610 37.5 35.1			Not travelling to work or study	8,610 37.5 35.1						

Ethnic Composition / Religion				Socio-economic classification				Economic Activity					
Persons	%	Edin %		Persons	%	Edin %		Male	Female	Person	%	Edin %	
All Residents	22,943			All persons 16-74	16,505			All persons 16 to 74	7,812	8,693	16,505		
White	22,522	98.2	96.0	Higher man. & Prof.	2,532	15.3	12.5	Ec. Active	6,036	5,574	11,610	70.3	67.4
Indian	48	0.2	0.5	Lower man. & Prof.	4,038	24.5	20.7	Employed - PT	381	1,824	2,205	13.4	11.7
Pakistani/S. Asian	103	0.4	1.3	Intermediate	2,059	12.5	10.9	Employed - FT	5,255	3,338	8,593	52.1	48.0
Chinese	78	0.3	0.8	Small employers	860	5.2	4.7	Unemployed	189	100	289	1.8	2.9
Other	192	0.8	1.5	Low supervis. & tech	748	4.5	4.9	FT Student	211	312	523	3.2	4.8
Religion				Semi routine	1,310	7.9	9.5	Ec. Inactive	1,776	3,119	4,895	29.7	32.6
None	7,310	31.9	36.5	Routine	714	4.3	6.6	Retired	1,141	1,692	2,833	17.2	12.4
Christian	14,328	62.5	54.8	Never worked & long term unemp.	278	1.7	3.2	Student	239	286	525	3.2	7.4
Other	399	1.7	3.7	Not classified	3,966	24.0	27.2	Looking after home	37	704	741	4.5	4.4
Not answered	906	3.9	5.0				Permanently sick	221	239	460	2.8	5.1	
							Other	138	198	336	2.0	3.3	

Country of Birth				Health - People in Households				Industry of employment					
Persons	%	Edin %		Persons	%	Edin %		Males	Females	Persons	%	Edin %	
Residents	22,943			All people in HHs	22,579			All Persons 16-74 in employment	5,832	5,454	11,286		
Scotland	19,030	82.9	77.8	Good/fair Health	21,211	93.9	92.2	Primary	115	43	158	1.4	1.6
England	2,286	10.0	12.1	Not good health	1,368	6.1	7.8	Manufacturing	622	241	863	7.6	7.5
rest of UK	350	1.5	1.7	Limiting illness	3,351	14.8	16.6	Construction	489	52	541	4.8	4.7
Elsewhere in Europe	504	2.2	3.4	No limiting illness	19,228	85.2	83.4	Wholesale and retail trade	620	579	1,199	10.6	11.6
Africa	150	0.7	1.0	H'hlds	%	Edin %	Hotels & Restaurants	291	247	538	4.8	6.5	
Asia	321	1.4	2.3	HH with 1or more persons with illness	2,839			Transport & Communication	511	180	691	6.1	5.9
N America	158	0.7	0.9	With no carers	2,101	74.0	75.4	Finance	793	900	1,693	15.0	11.3
S America	28	0.1	0.1				Business services	1,077	779	1,856	16.4	16.1	
Oceania	110	0.5	0.7				Public admin/defeance	519	446	965	8.6	7.4	
Other	6	0.0	0.0				Education	303	717	1,020	9.0	9.3	
							Health & social work	221	995	1,216	10.8	12.0	
							Other	271	275	546	4.8	6.1	

Full Time Student - Absent in Term Time				Qualifications				Occupation					
Males	Females	Persons		Persons	%	Edin %		Male	Female	Persons	%	Edin %	
All students	141	155	296	All Persons 16-74	16,505			All Persons 16-74 in employment	5,832	5,454	11,286		
Under 10	2	1	3	Standard grade / SVQ 1,2	3,604	21.8	19.9	Manager & snr officials	1,319	735	2,054	18.2	14.9
10 to 14	7	7	14	Higher grade / SVQ 3	2,913	17.6	18.6	Professional	1,214	864	2,078	18.4	17.5
15 to 19	62	73	135	HND / SVQ 4, 5	1,052	6.4	6.0	Associate prof. & Tech.	865	931	1,796	15.9	16.2
20 to 24	66	73	139	Degree	5,956	36.1	32.5	Admin. & secretarial	441	1,404	1,845	16.3	14.7
25 to 34	3	0	3	No Qualification	2,980	18.1	22.9	Skilled Trade	670	74	744	6.6	7.1
35 plus	1	1	2				Personal service	95	521	616	5.5	5.9	
							Sales & customer service	293	549	842	7.5	8.4	
							Process, plant & machine op.	427	59	486	4.3	4.5	
							Elementary Occupations	508	317	825	7.3	10.8	

Area Profile report for Multi Member Wards Corstorphine/Murrayfield

	Multi Member Wards: Corstorphine/Murrayfield	Scottish Parliamentary Constituency: Edinburgh Central	Community Health Partnership: Edinburgh North Community Health Partnership	Local Authority: Edinburgh, City of	Health Board: Lothian	Scotland
Crime and Justice						
Number of SIMD crimes per 10,000 of the population: 2004		793				
Economic Activity, Benefits and Tax Credits						
Percentage of populations aged 16-24 claiming Jobseekers Allowance: 2005Q04	2.5	1.7	3.5	2.6	3.0	4.2
Percentage of populations aged 25-49 claiming Jobseekers Allowance: 2005Q04	0.8	2.4	2.1	2.1	2.0	2.5
Percentage of populations aged 50 to pensionable age claiming Jobseekers Allowance: 2005Q04	0.9	2.5	1.8	1.6	1.4	1.9
Total Income Support claimants.: 2006Q02	280	3100	8010	17790	29445	220750
Percentage of population aged 60 and over claiming guaranteed pension credits: 2005Q04	7.9	19.3	15.1	15.4	16.4	19.8
Percentage of population aged 16 to 19: 2005		5.9		6.9		
Percentage of population aged 20 to 24: 2005		3.8		7.6		
Percentage of population aged 25 to 49: 2005		10.8		11.5		
Percentage of population aged 50 to pension age: 2005		19.6		15.9		
Education, Skills and Training						
Number of Male pupils on the S4 roll: 2004	69	163	797	1791	3831	29505
Number of Female pupils on the S4 roll: 2004	79	159	860	1852	3855	28682
Average tariff score of Male pupils on the S4 roll: 2004	185	150	164	166	167	162

Average tariff score of Female pupils on the S4 roll: 2004	205	164	175	171	177	178
Average tariff score of all pupils on the S4 roll: 2004	196	157	170	169	172	170
Total Number of pupils in primary schools: 2005	1171	2320	11801	25148	54067	386258
Total Number of pupils in secondary schools: 2005	867	1700	9285	19466	41850	312889
Primary percentage attendance rate: 2005	96.50	94.96	95.10	94.92	95.08	95.09
Secondary percentage attendance rate: 2005	93.42	88.74	90.48	90.06	90.47	90.29
Exclusions per 1,000 pupils: 2004		41		37		51
Health						
Low weight live singleton birth rate per 1000 live singleton births: 2002-2004	14.98	20.38	21.01	22.38	22.67	24.65
Emergency hospital admissions - both sexes - aged 65 and over - rate per 100000 population: 2005	19,530	22,295	22,911	22,574	23,096	24,337
Percentage of children breastfeeding at the 6 to 8 week review.: 2005	66.35	66.91	58.32	57.22	48.54	37.29
Percentage of women smoking at booking: 2002-2004	7.1	10.1	12.6	12.8	16.4	24.3
Depression, Anxiety: Estimated practice team annual prevalence rate - year ending 31st March: 2005		0.11		0.10		0.11
Diabetes: Estimated practice team annual prevalence rate - year ending 31st March: 2005		0.02		0.03		0.03
Percentage vaccinated against MMR by 24 months of age.: 2005	93.5	89.2	90.5	89.8	91.6	90.0
Hospital admissions for alcohol misuse - rate per 100000 population: 2001-2004	339.88	674.39	695.75	671.10	621.04	722.66
Hospital admissions for drugs misuse - rate per 100000	96.30	179.45	188.53	173.08	141.41	127.46

population: 2001-2004						
Housing						
Percentage of dwellings in Council Tax band A: 2005	0.49	7.07	9.11	10.84	11.95	23.80
Percentage of dwellings in Council Tax bands A to C: 2005	30.76	54.41	47.84	49.41	55.91	63.76
Percentage of dwellings in Council Tax bands F to H: 2005	34.48	13.41	19.72	19.69	16.62	11.35
Total number of dwellings per hectare: 2005	17.43	26.45	9.22	8.49	2.15	0.31
Total Number of Households: 2001		38016		204683		2192246
Percentage of Households - Owned: 2001		59.08		68.57		62.59
Percentage of Households - Social Rented: 2001		17.30		17.91		29.41
Percentage of Households - Private Rented: 2001		23.62		13.53		8.00
House sales, median price: 2005		131,000		137,200		88,000
House sales, mean price: 2005	200,006	162,282	174,349	174,728	158,710	122,104
Physical Environment						
Percentage of people within 0-500 metres of any Derelict Site: 2004	3.9	31.0	4.5	8.6	17.2	27.4
Air Quality 2002-2004 - Nitrogen Dioxide concentration - Population weighted: 2002-2004	23.0	25.4	21.8	21.8	18.5	
Air Quality 2002-2004 - PM10 concentration - Population weighted: 2002-2004	14.7	15.1	14.3	14.4	14.3	
Population						
SAPE All Persons: 2005	21808	80151	217588	457830	792600	5094800
SAPE Persons 16-19: 2005	835	3818	9183	23549	40704	263370
SAPE Child Population %: 2005	16.67	9.89	15.40	15.39	17.53	18.23
SAPE Working Population %: 2005	59.70	76.39	66.37	67.40	65.17	62.63
SAPE Pensionable Population %: 2005	23.63	13.72	18.23	17.21	17.31	19.14

SAPE Working Males: 2005	6493	31438	72493	156056	261429	1635278
SAPE Working Females: 2005	6527	29789	71929	152530	255069	1555575

Corstophine/Murrayfield ward – future developments

Planning proposals arrive in two forms: those defined in the Development Plan as opportunities for development; and, speculative proposals which have not been defined. Both can form the basis for planning applications, and just because a piece of land has been defined as suitable for a particular use, say housing, does not mean that an application for housing will be any less contentious. Below are listed the major development opportunities as defined in the city's Local Plans.

Information on current planning applications can be accessed at www.edinburgh.gov.uk/planning. From this portal you can access information on the planning system (policy documents and guidance) and search for application by address, application reference, ward, date and on a map.

HOUSING

- **Pinkhill (Cala Homes)** - 64 units allocated

NON-HOUSING

- **None**

HOW TO INTERPRET THE SCOTTISH INDICES OF MULTIPLE DEPRIVATION (SIMD) DATA MAPPED IN THE AREA PROFILES

The SIMD is the Executive's official tool for identifying small area concentrations of multiple deprivation across all of Scotland and is relevant to policies aimed at tackling the causes and effects of area based multiple deprivation.

SIMD 2006 divides Scotland up into 6,505 small geographical areas (called 'data zones'), with a median population size of 769. These are ranked from 1 (most deprived) to 6505 (least deprived) using 37 indicators of deprivation across seven categories or domains: current income, employment, health, education, geographic access to services, housing and crime.

Employment Domain:

The employment domain is a measure of 'exclusion from the world of work' and identifies the proportion of the working age population who are unemployed or are not involved in the labour market due to ill health or disability.

- Unemployment Claimant Count averaged over 12 months
- Working age Incapacity Benefit recipients
- Working age Severe Disablement Allowance recipients
- Compulsory New Deal participants - New Deal for the under 25s and New Deal for the 25+ not included in the unemployment claimant count

Housing:

The domain is intended as a direct measure of material living standards. It is currently in the early stages of development but it is intended that in the long term, it should focus on direct measures of inadequacy of housing, covering physical conditions, suitability and security of tenure.

- Persons in households which are over-crowded
- Persons in households without central heating

Geographic Access:

This domain is intended to capture a set of problems which operate at area level and which are seen by many as important in their own right. These are the problems (financial cost, time and inconvenience) of having to travel a relatively long distance to access basic services. The domain measures aspects of access deprivation that are relevant to all people since it is important to be able to access key local services in both rural and urban areas.

- Drive time to GP
- Drive time to shopping facilities
- Drive time to petrol station
- Drive time to primary and secondary schools
- Drive time to post office
- Public transport time to GP
- Public transport time to shopping facilities
- Public transport time to Post Office

Health Domain:

The domain is intended to identify areas with higher than expected levels of ill health or mortality given the age / sex profile of the population. There is currently no source available which can directly measure ill-health at the small area level and can be regularly updated. The concept is therefore measured indirectly by indicators which are correlated with or are risk factors for ill-health.

- Standardised Mortality Ratio
- Hospital episodes related to alcohol use
- Hospital episodes related to drug use
- Comparative illness factor
- Emergency admissions to hospital
- Proportion of population being prescribed drugs for anxiety, depression or psychosis
- Proportion of live singleton births of low birth weight

Crime Domain:

The SIMD crime domain measures the rate of recorded SIMD crime at small area level using 2004 recorded crime data and is based on five indicators of broad crime types: crimes of violence; drug offences; domestic house breaking; minor assault; and vandalism. The indicators used were chosen on the basis of relevance to impact on the local neighbourhood and availability of data. The crime domain score is a sum of the recorded crimes in each of the indicators and is referred to as 'SIMD crime' rather than total crime, as it does not include all recorded crimes.

- Domestic house breaking
- Drug offences
- Minor assault
- Crimes of violence
- Vandalism

Education, Skills and Training Domain:

The Education, Skills and Training domain focuses on low educational achievement as both an outcome and a cause of poverty and deprivation.

- School pupil absences
- Pupil performance on SQA at stage 4
- Working age people with no qualifications
- 17 - 21 year olds enrolling into full time higher education
- School leavers aged 16-18 not in education

The above information is extracted from the: Scottish Indices of Multiple Deprivation 2006: Technical Report. For further details please see:

<http://www.scotland.gov.uk/Resource/Doc/933/0041180.pdf>