



Ward
8

AREA PROFILE

Community
Planning



Introduction to Area Profile

This Area Profile has been produced by the Performance and Community Engagement division within Services for Communities at the City of Edinburgh Council.

We are interested in hearing your comments and feedback on the profiles so please contact either:

- Pam Lambert (pam.lambert@edinburgh.gov.uk),
- Justin Ward (justin.ward@edinburgh.gov.uk)
- Daniel Sawyers (daniel.sawyers@edinburgh.gov.uk).

The profiles have been based around the Scottish Indices of Multiple Deprivation (SIMD) and updates to the profiles will be in line with the publication of the new SIMD data and other appropriate information from partner organisations as it becomes available.

Thank you

Angela Leitch
Head of Performance and Community Engagement
Services for Communities

Colinton and Fairmilehead – Overview of Statistical Data

Colinton/ Fairmilehead ward lies to the far south south of the City, with Pentland Hills ward to the west and Liberton/Gilmerton to the east. The north part of the ward contains the residential areas of Colinton, Bonaly, Dreghorn, Swanston, Fairmilehead and Mortonhall. The southern part of the ward, lying to the south of the City of Edinburgh bypass, contains the Swanston Golf Course and the Pentland Hills Regional Park.

Employment

Colinton and Fairmilehead has a lower rate of people excluded from the world of work. Compared to the rest of Scotland, there is a lower proportion of the working age population who are unemployed or are not involved in the labour market due to ill health or disability.

Ward significantly above average compared to the rest of Scotland

Housing

Overall Colinton and Fairmilehead has good measures of material living standards with a lower number of persons in households which are over-crowded or without central heating.

Ward above average compared to the rest of Scotland

Health

The people within Colinton and Fairmilehead are healthier than the average – that is that there is a lower level of risk associated with poor health (i.e. admission rates for alcohol or drug taking or prescriptions for anxiety, depression or psychosis).

Ward significantly above average compared to the rest of Scotland

Crime

Local neighbourhoods within Colinton and Fairmilehead experience crime levels that are lower than the Scottish average. This is based on types of crime that affect a local neighbourhood: crimes of violence; drug offences; domestic house breaking; minor assault; and vandalism.

Ward above average compared to the rest of Scotland

Education, Skills and Training

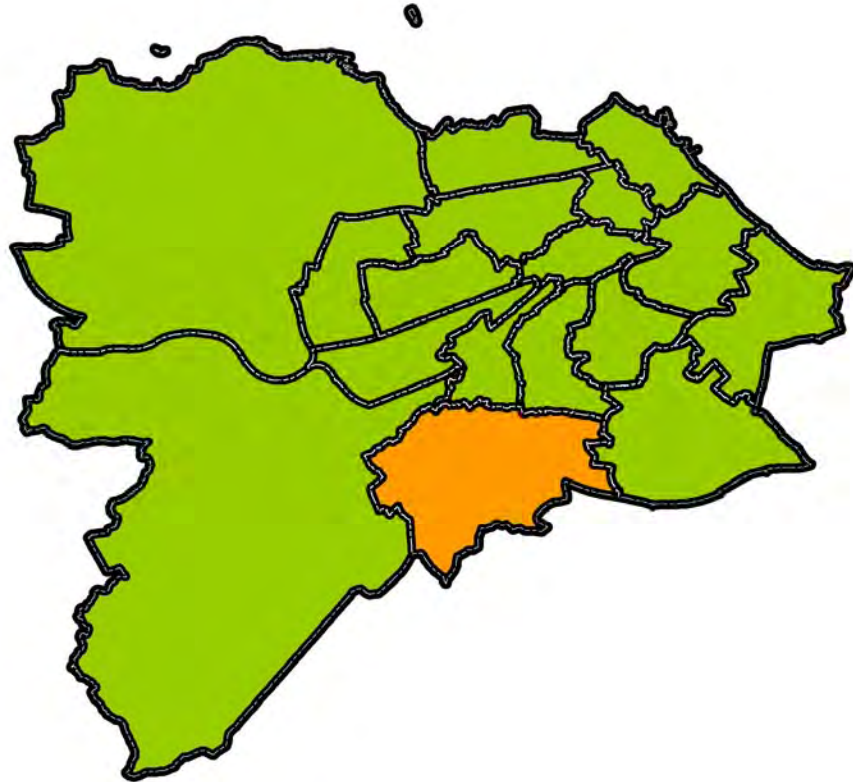
Focusing on low educational achievement as both an outcome and a cause of poverty and deprivation, compared to the rest of Scotland Colinton and Fairmilehead has higher levels of people within education, moving into further education, and performing well at school.

Ward above average compared to the rest of Scotland

AREA PROFILE

Community
Planning

COLINTON AND FAIRMILIEHEAD



COLINTON/ FAIRMILEHEAD WARD

Ward
08

Population: 25,099
Unemployment Rate: 2.4%
No qualifications: 19.8%
Good/fair Health: 93.8%

Household Tenure:

- Owner Occupied: 79.6%
- Council: 8.5%
- Other social: 3.3%
- Private Landlord: 6.6%
- Living rent free: 2.0%

(CENSUS, 2001)

Area Profile: **Colinton/Fairmilehead**

AREA PROFILING

“This area profile brings together a number of components to help map the quality of life and services in a local area. It can provide a valuable resource for neighbourhood managers and neighbourhood partnerships to address the issues that matter in their locality”



The profiles use the Scottish Indices of Multiple Deprivation (SIMD) – the Scottish Executive’s official tool for identifying small area concentrations of multiple deprivation across Scotland. This has been selected as it is relevant to policies aimed at tackling the causes and effects of area based multiple deprivation.

For a detailed explanation of SIMD and guidance on how to use the SIMD data please see the last page of this report.

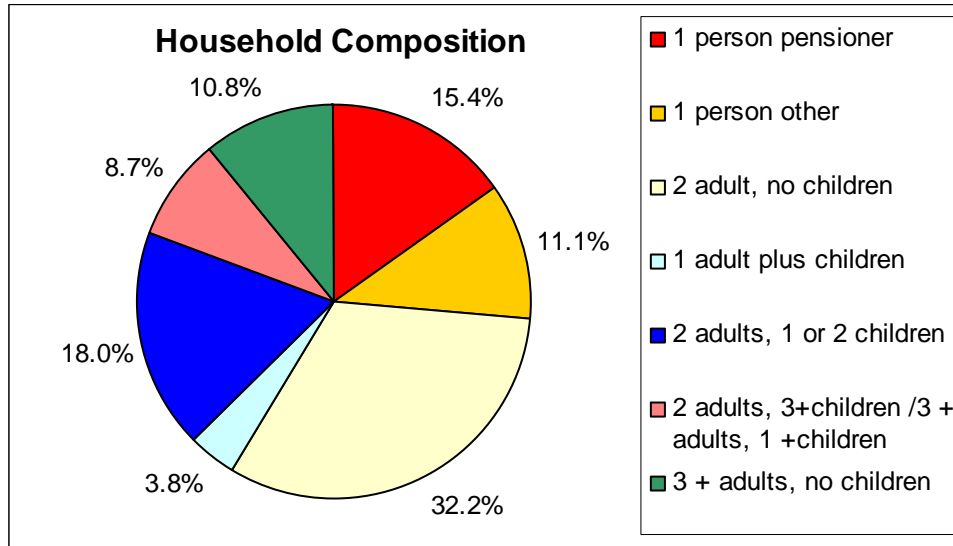


PEOPLE AND PLACE

Population dynamics

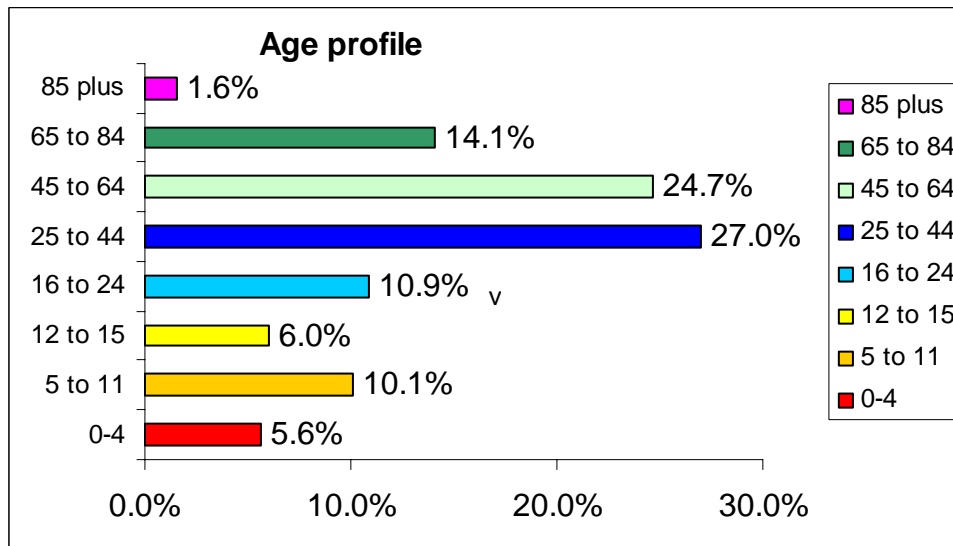
Total Population – 25,099

Density (persons/ha) – 13.7



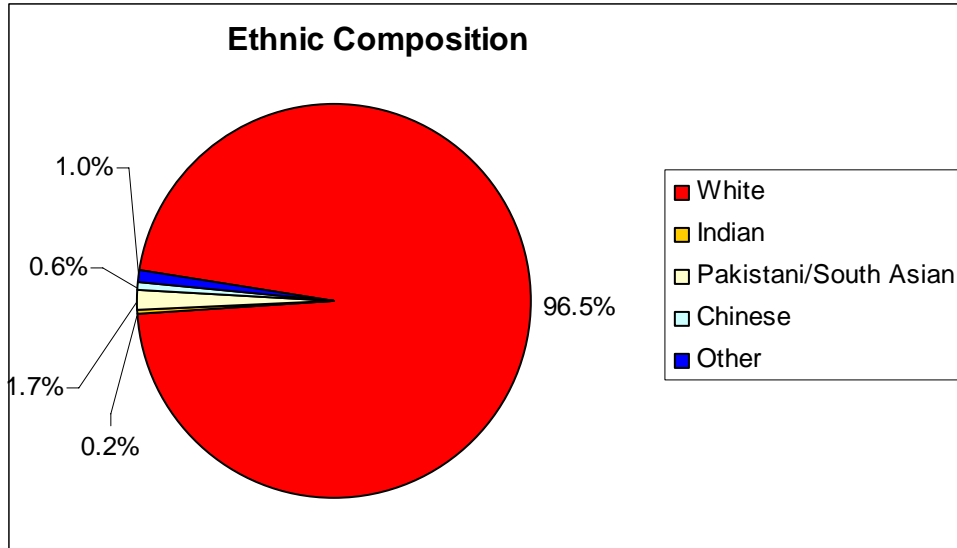
For census information please see:

<http://www.scrol.gov.uk/scrol/common/home.jsp>



<http://www.scrol.gov.uk/scrol/common/home.jsp>

Area Profile: **Colinton/Fairmilehead**

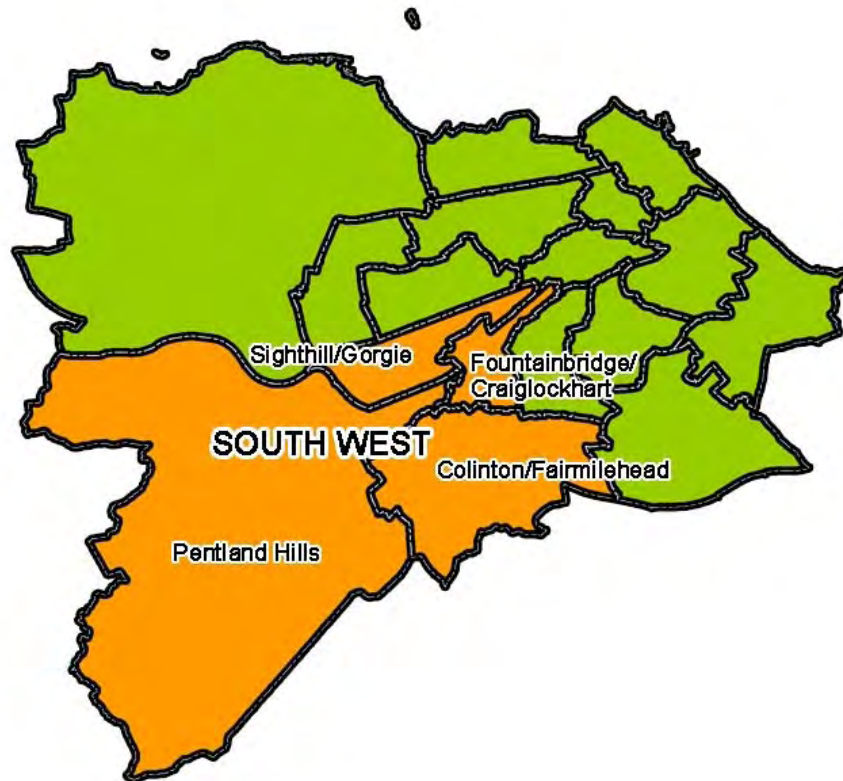


<http://www.scrol.gov.uk/scrol/common/home.jsp>



COMMUNITY INVOLVEMENT AND COHESION

The Colinton/Fairmilehead Ward is part of the South West Community Planning Area (CPA) that includes Sighthill/Gorgie, Fountainbridge/Craiglockhart and Pentland Hills.



For a list of the voluntary and community groups please see the following site that can be searched alphabetically, by postcode and by category:
http://www.edinburghcompact.org.uk/_localOrganisations/localOrganisations.asp



ECONOMIC WELL-BEING

The Scottish Indices of Deprivation 2006 reveal relatively high levels of overall well-being in the Colinton/Fairmilehead Ward. However there are a couple of small pockets towards the north east where deprivation ranks amongst the worst 5-15% in Scotland.

The Colinton/Fairmilehead Ward has an unemployment rate of 2.4% compared with 2.9% city-wide. Colinton/Fairmilehead also has a lower proportion of people who have never worked and long-term unemployed, at 2% compared to 3.2% across Edinburgh. 3.2% of people are permanently sick compared to 5% city-wide (Census, 2001).

Unemployment levels in 2006

The most recent unemployment data at the time of writing relates to December 2006 (City of Edinburgh Council). The closest 'fit' for unemployment data to the new multi-member Wards is the 58 old wards (this is unlikely to change in the short-term).

The old 58 wards do not always fit in neatly to the new 17 multi-member wards; but to address the difference in the significance to the overlap a ranking has been applied to the unemployment data for the new ward.

The old ward of Colinton fits almost completely within the Colinton/Fairmilehead Ward. Firrhill is also almost completely subsumed within the new ward boundary. Unemployment rates are significantly lower than the city-wide level of 2.2% in December 2006.

58 old Wards	Number unemployed	Unemployment Rate	Rank
Baberton**	34	0.7	53
Colinton*	24	0.4	58
Firrhill*	106	2.3	22
Fairmilehead**	34	0.7	53
EDINBURGH	6,592	2.2	

* Completely within the multi-member ward boundary

** - Significant overlap – this is a significant area in the new multi-member Ward

*** - Insignificant overlap – this is a relatively insignificant area in the new multi-member Ward



HOUSING

The Housing component that forms the overall Scottish Indices of Multiple Deprivation rankings takes account of overcrowding in households and households without central heating. Across the whole of Scotland, Leith and the City Centre are ranked in the worst 5% for the SIMD rankings – attributable to higher rates of overcrowding and households without central heating as recorded by the 2001 Census.

Colinton/Fairmilehead Ward rates ranks well in Housing component from SIMD, and as such, the overall Ward level census data presents a better picture to that of the city-wide:

Area	Overcrowded households	Households without central heating
Edinburgh	14.2%	12.3%
Colinton/Fairmilehead Ward	6.8%	5.9%

(Census, 2001)

8.5% of households in the Colinton/Fairmilehead Ward rented their property from the City of Edinburgh Council, lower than the city-wide level of 10.9%.

Area	Owner occupied	Council	Other social	Private Landlord	Living Rent Free
Edinburgh	68.6%	10.9%	5.5%	12.5%	2.4%
Colinton/Fairmilehead Ward	79.6%	8.5%	3.3%	6.6%	2.0%

(Census, 2001)

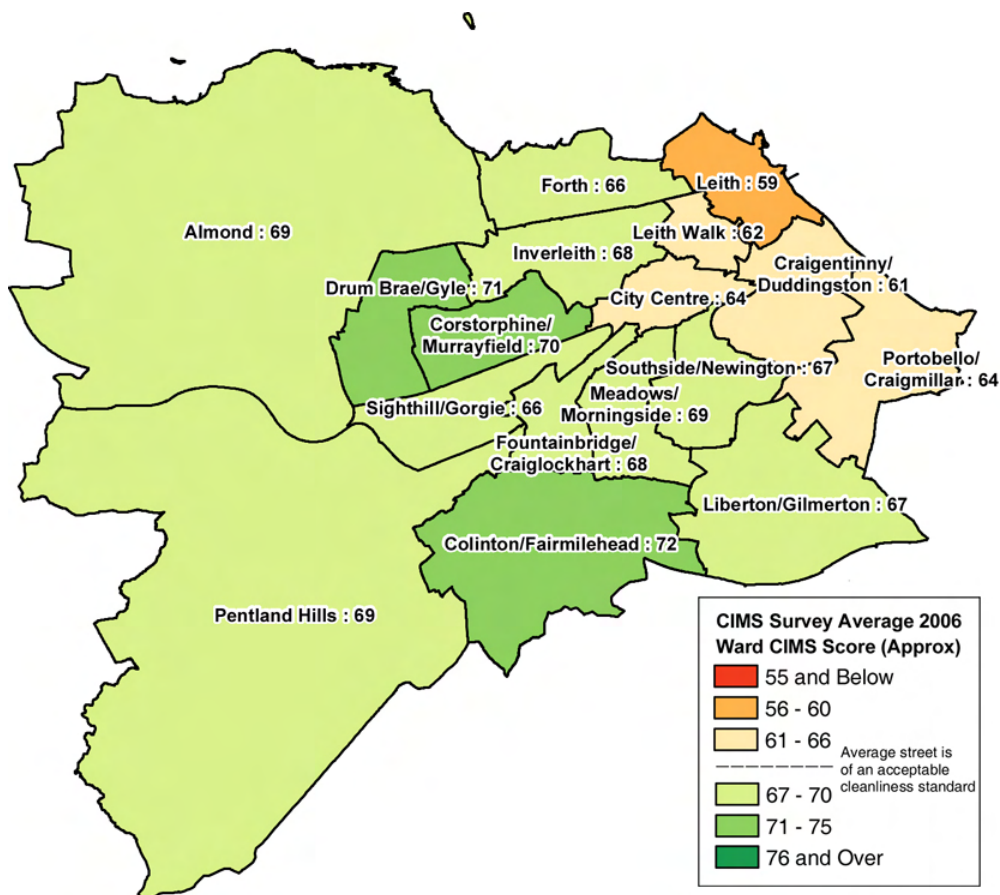
There are currently 651 council houses in the Colinton/Fairmilehead Ward and 1239 ex-council houses that have been sold to sitting tenants (I world¹, December 2006).

¹ I World is the system used by Housing and Regeneration within Services for Communities at the City of Edinburgh Council.



ENVIRONMENT

The Cleanliness Index Monitoring System (CIMS) score is an objective measure of the cleanliness of Edinburgh's streets captured by a quarterly survey carried out by Keep Scotland Beautiful. Each surveyed street is given a score between 0 – 3 depending upon its cleanliness. The CIMS score is then a ratio between the achieved score and the best possible score for a ward. A score of 66 corresponds to a score that shows on average all surveyed streets were of an acceptable standard of cleanliness. The score on the map shown below is an average for the four surveys carried out in 2006 and aggregated approximately into the new ward geography based upon geographical areas, because of this approximation the data should be treated with caution.



The average city-wide score for the same period was 66.

Parks

There are a number of parks and green spaces in the more built up areas of the ward. The research contained within the Parks & Gardens Strategy did not cover any parks near as the majority of the parks covered are located within the city centre (Audience Business – Parks Review, 2002).

Area Profile: **Colinton/Fairmilehead**



TRANSPORT AND ACCESS

Across Edinburgh, access to services² – petrol stations, primary schools, secondary schools, shopping facilities, post offices – is relatively good compared against the whole of Scotland. Compared to rural areas and small towns, one could expect that the capital city would be well connected to services.

Between 1999 and 2004 there was a significant increase in the proportion of journeys made by public transport by Edinburgh residents, with Lothian Buses plc, for example, carrying around 25% more passengers. The proportion of journeys on foot or by bicycle did not change significantly in this period, compared to a trend of falling numbers across Scotland. Looking specifically at travel to work, over of 50% of journeys by Edinburgh residents are made by public transport, walking or cycling. This is the highest rate in Scotland.

The total number of journeys by Edinburgh residents increased during this period, reflecting population growth, additional jobs in Edinburgh and increasing car ownership. The percentages indicated below are therefore percentages of an increasing total number of journeys.

%	Cycle	Walk	Public transport	Car (inc. passengers)	Other	Sample size
1999	2	24	16	57	2	2714
2004	2	23	19	54	3	1313

Increasing public transport patronage is closely linked with the increasing provision of bus priorities and consequent improvement in bus reliability.

Use of the new park & ride sites is increasing rapidly, with 75% of the 950 spaces at Ingliston and Hermiston occupied at peak times in September 2006. This is an excellent performance just one year after the sites opened in September 2005.

In the city centre, new traffic management arrangements have reduced traffic levels in the areas of greatest pedestrian activity, while 20mph zones in many residential areas have reduced the danger and domination of traffic.

² Access to services is aggregated for the Scottish Indices of Multiple Deprivation (SIMD) and further details of all the measures included can be found on the website <http://www.scotland.gov.uk/Publications/2006/10/13142913/0>



COMMUNITY SAFETY

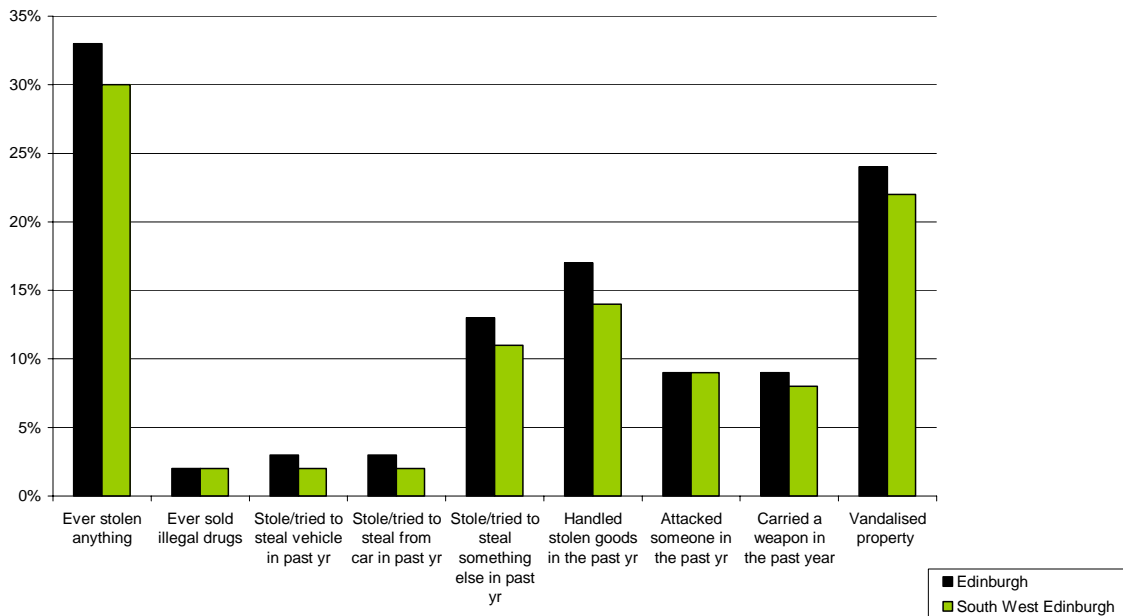
Communities that Care (CtC)³, survey results showed the following:

Young Peoples Perception of their Area

Perception of Area	National	Edinburgh	South West Edinburgh	North Edinburgh	West Edinburgh	South Edinburgh	East Edinburgh
Lots of fights in their neighbourhood	16%	18%	19%	23%	14%	15%	23%
Crime and/or drug selling	23%	19%	19%	23%	17%	17%	25%
Lots of empty/abandoned buildings	8%	6%	5%	9%	4%	5%	9%
Lots of graffiti	15%	18%	18%	23%	14%	16%	23%
I feel unsafe after dark	21%	20%	21%	22%	19%	17%	26%

Area Analysis – Youth Crime

South West Edinburgh - Youth Crime and Antisocial Behaviour



³ Communities that Care developed and piloted a self-completion youth survey. In the period October 2005 – March 2006, 17,476 secondary school pupils (S1 to S5) who live and study in Edinburgh, were surveyed. Communities that Care is a long-term preventive programme which establishes a working partnership between local people, agencies and organisations to promote healthy personal and social development among young people, while reducing the risks of different problem behaviours. The survey is designed to provide information on the prevalence of risk and protective factors among young people aged 11-16, and also to assess the current prevalence of problem behaviours within a community.

Area Profile: **Colinton/Fairmilehead**

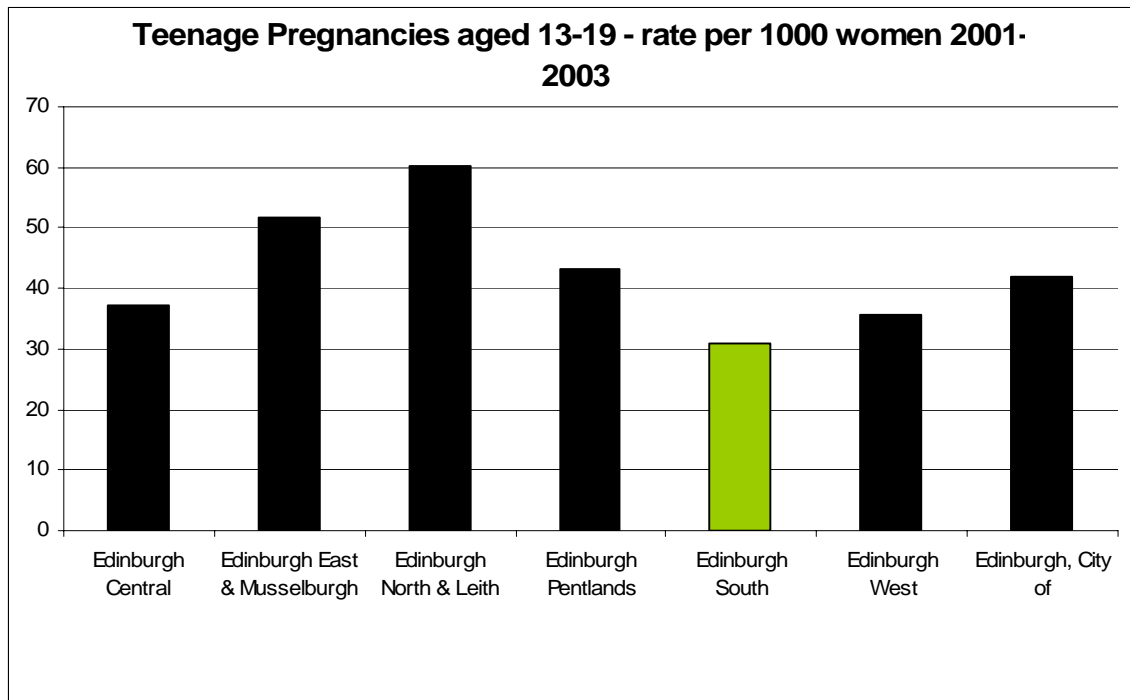


HEALTH AND WELL-BEING

Across Edinburgh, 92% of people are in good/fair health, in Colinton/Fairmilehead 93.8% are in good/fair health.

14.5% of people in the Colinton/Fairmilehead Ward have a limiting illness; lower than the city-wide level of 16.6% (Census, 2001).

Data on teenage pregnancies is gathered to the lowest level of the Scottish Parliamentary Constituencies. The most recent data is presented below:



(Scottish Neighbourhood Statistics www.sns.gov.uk)



EDUCATION AND LIFE LONG LEARNING

One in five people within the Colinton/Fairmilehead Ward have no qualifications – this is in line with the number of people across the city as a whole. For higher grade level the Colinton/Fairmilehead Ward outpaces the rest of Edinburgh at 21.7% compared to 18.6%.

The education, skills and training overall SIMD ranking, shows that the area is reasonably affluent when compared against the rest of Scotland – this means that across a range of indicators – no qualifications, people between 16 -18 not in full time education, pupils performance, absence from school – the Colinton/Fairmilehead Ward does well in regards to a lack of deprivation.

Libraries

Item home site	PC Issues (2005/06)	No. of PCs	Av. Loans per PC.	Number of borrowers (2005/06)	No. of Guest PC Issues (2005/06)	Guest PC Issues as % of PC Issues (2005/06)	Total Members at (02/04/06)	Visitor Counts (2005/06)
Colinton Library	1949	4	487	251	85	4.4%	3,668	50,366
Oxgangs Library	8033	11	730	1,043	171	2.1%	10,522	130,207

The following primary schools are in the area:

Primary School	Reading	Writing	Maths
Bonaly	95	91	95
Buckstone	96	86	84
Colinton	35	29	12
St Mark's	96	67	88

(Source: <http://news.scotsman.com/topics.cfm?tid=1361&id=2241002005>)

There is one secondary school in the ward. The nearest secondary school outside the Ward boundary is Wester Hailes Education Centre:

Secondary School	No. of pupils	Percentage authorised absences for 2005/06 (S1-S5)	Percentage unauthorised absences for 2005/06 (S1-S5)	Percentage of the S4 year group achieving five or more awards at SCQF Level 4 (Standard Grade General level or equivalent) or better	Staying on to S5
Edinburgh		6.5%	3.1%	74%	64%
Scotland		7.5%	1.8%	76%	64%
Firrhill High School	1,142	4.1%	5.0%	82%	77%
Wester Hailes* Education Centre	463	9.8%	4.9%	50%	48%

(Source: <http://www.scottishschoolsonline.gov.uk/>)

*

NEET group

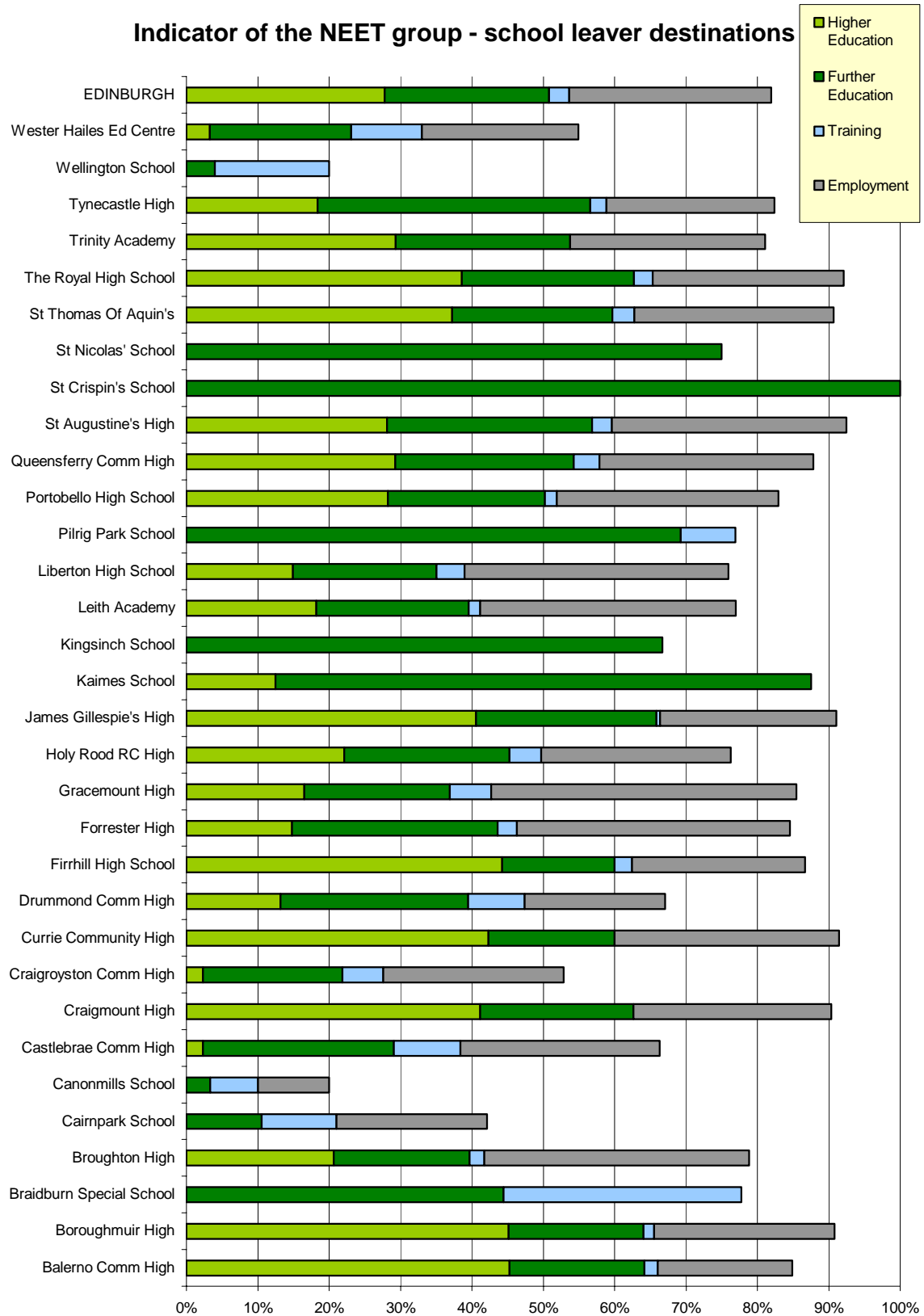
The table below is based on School Leaver Destination survey and is the main set for the NEET (Not in Education, Employment or Training) group.

School	Unemployed Seeking	Unemployed Not Seeking	Not Known	Total Leavers
Firrhill High School	11%	2%	1%	165
Wester Hailes Ed Centre	33%	12%	0%	91

As the graph below shows the % of school leavers in education, employment or training is as follows:

- Firrhill has 86%
- Wester Hailes Education Centre has 55%

Indicator of the NEET group - school leaver destinations



Area Profile: **Colinton/Fairmilehead**

Ward 8 - Colinton/Fairmilehead Ward

Key statistics			Age Structure						Household Composition			
			Total	Male	Female	% Total	Edin %		H'holds	%	Edin %	
Total Population	25,099		0 to 4	1,416	685	731	5.6	4.9	Total households	9,900		
Males	12,349		5 to 11	2,526	1,272	1,254	10.1	7.2	1 Person: Pensioner	1,522	15.4	14.4
Females	12,750		12 to 15	1,500	837	663	6.0	4.2	Other	1,100	11.1	23.1
Households	9,900		16 to 24	2,738	1,684	1,054	10.9	14.4	2 adult, no children	3,183	32.2	30.4
Persons in Households	24,166		25 to 44	6,769	3,244	3,525	27.0	32.2	1 adult plus children	376	3.8	4.5
Persons in communal establishments	933		45 to 64	6,203	3,022	3,181	24.7	21.7	2 adults, 1 or 2 children	1,782	18.0	11.1
Area (ha)	1,832		65 to 84	3,547	1,480	2,067	14.1	13.5	2 adults, 3+children /	865	8.7	5.3
Density (persons/ha)	13.7		85 plus	400	125	275	1.6	1.9	3+ adults, 1+children			
			Total	25,099	12,349	12,750			3+ adults, no children	1,072	10.8	11.2
Household Tenure / Amenities			Household Size by number of rooms						Household Size by number of residents			
	H'holds	%	Edin %		H'holds	%	Edin %		H'holds	%	Edin %	
Owner Occupied	7,884	79.6	68.6	All Households	9,900			All Households	9,900			
Rented:				1 room	49	0.5	1.1	1 Person	2,622	26.5	37.5	
Council	837	8.5	10.9	2 rooms	241	2.4	6.3	2 People	3,394	34.3	33.0	
Other social	330	3.3	5.5	3 to 4 rooms	3,118	31.5	48.7	3 to 4 People	3,211	32.4	24.8	
Private l'lord	652	6.6	12.5	5 to 6 rooms	4,043	40.8	31.7	5 or More People	673	6.8	4.8	
Living rent free*	197	2.0	2.4	7+ Rooms	2,449	24.7	12.3	Average Household Size	2.4		2.1	
H'holds without								Overcrowded h'holds	669	6.8	14.2	
Central Heating	589	5.9	12.3	Average number of rooms/hh	5.3		Edin.					
Bath / Shower	7	0.1	0.3				4.5					
*May include some tenants whose rent is paid for by a third party												
Car Availability			Transport to Work / Study						Dwellings			
	H'holds		Edin		No.	%	Edin %		No.	%	Edin %	
Households	9,900			Train	98	0.4	0.8	Dwellings	10,174			
% H'holds with:				Bus	3,691	14.7	16.7	H'hold Spaces	10,174			
0 Car	24.4		39.5	Taxi	62	0.2	0.4	Vacant	261	2.6	4.1	
1 Car	45.0		43.5	Car - drive	6,505	25.9	20.3	2nd Residence	13	0.1	0.7	
2 Cars	25.9		14.5	Car - passenger	2,286	9.1	5.8	Detached	3,496	34.4	11.2	
3 Cars	3.8		1.9	Motorcycle	103	0.4	0.3	Semi-detached	2,389	23.5	14.1	
4 or more cars	0.8		0.5	Bicycle	329	1.3	1.9	Terraced	1,266	12.4	14.5	
Total cars	11,092			Foot	3,068	12.2	18.3	Flats/tenement	3,021	29.7	60.1	
				Other	125	0.5	0.4	Other	2	0.0	0.2	
				Not travelling to work or study	8,832	35.2	35.1					

Ethnic Composition / Religion				Socio-economic classification				Economic Activity						
		Persons	%	Edin %			Persons	%	Edin %	Male	Female	Person	%	Edin %
All Residents		25,099			All persons 16-74		17,865			All persons 16 to 74		8,872	8,993	17,865
White		24,210	96.5	96.0	Higher man. & Prof.		2,537	14.2	12.5	Ec. Active		6,650	5,643	12,293
Indian		62	0.2	0.5	Lower man. & Prof.		4,166	23.3	20.7	Employed - PT		453	2,235	2,688
Pakistani/S. Asian		435	1.7	1.3	Intermediate		2,490	13.9	10.9	Employed - FT		5,695	2,935	8,630
Chinese		148	0.6	0.8	Small employers		922	5.2	4.7	Unemployed		231	196	427
Other		244	1.0	1.5	Low supervis. & tech		734	4.1	4.9	FT Student		271	277	548
Religion					Semi routine		1,577	8.8	9.5	Ec. Inactive		2,222	3,350	5,572
None		7,441	29.6	36.5	Routine		836	4.7	6.6	Retired		1,085	1,606	2,691
Christian		15,759	62.8	54.8	Never worked & long term unemp.		378	2.1	3.2	Student		458	320	778
Other		708	2.8	3.7	Not classified		4,225	23.6	27.2	Looking after home		45	909	954
Not answered		1,191	4.7	5.0						Permanently sick		285	276	561
										Other		349	239	588
Country of Birth				Health - People in Households				Industry of employment						
		Persons	%	Edin %			Persons	%	Edin %	Males	Females	Persons	%	Edin %
Residents		25,099			All people in HHs		24,166			All Persons 16-74 in employment		6,395	5,424	11,819
Scotland		19,804	78.9	77.8	Good/fair Health		22,659	93.8	92.2	Primary		132	48	180
England		3,372	13.4	12.1	Not good health		1,507	6.2	7.8	Manufacturing		566	205	771
rest of UK		352	1.4	1.7	Limiting illness		3,493	14.5	16.6	Construction		451	50	501
Elsewhere in Europe		534	2.1	3.4	No limiting illness		20,673	85.5	83.4	Wholesale and retail trade		699	628	1,327
Africa		168	0.7	1.0	H'hlds % Edin %					Hotels & Restaurants		215	225	440
Asia		606	2.4	2.3	HH with 1or more persons with illness		2,929			Transport & Communication		473	139	612
N America		143	0.6	0.9	With no carers		2,123	72.5	75.4	Finance		705	661	1,366
S America		21	0.1	0.1						Business services		944	675	1,619
Oceania		98	0.4	0.7						Public admin/defeance		1,197	358	1,555
Other		1	0.0	0.0						Education		440	897	1,337
										Health & social work		326	1,239	1,565
										Other		247	299	546
Full Time Student - Absent in Term Time				Qualifications				Occupation						
		Males	Females	Persons			Persons	%	Edin %	Male	Female	Persons	%	Edin %
All students		173	179	352	All Persons 16-74		17,865			All Persons 16-74 in employment		6,395	5,424	11,819
Under 10		3	3	6	Standard grade / SVQ 1,2		4,201	23.5	19.9	Manager & snr officials		1,465	602	2,067
10 to 14		10	8	18	Higher grade / SVQ 3		2,884	16.1	18.6	Professional		1,210	890	2,100
15 to 19		54	69	123	HND / SVQ 4, 5		1,069	6.0	6.0	Associate prof. & Tech.		1,337	934	2,271
20 to 24		96	95	191	Degree		6,165	34.5	32.5	Admin. & secretarial		411	1,313	1,724
25 to 34		10	3	13	No Qualification		3,546	19.8	22.9	Skilled Trade		672	52	724
35 plus		0	1	1						Personal service		138	616	754
										Sales & customer service		275	575	850
										Process, plant & machine op.		385	49	434
										Elementary Occupations		502	393	895

Area Profile report for Multi Member Wards Colinton/Fairmilehead

	Multi Member Wards: Colinton/Fairmilehead	Scottish Parliamentary Constituency: Edinburgh Pentlands	Community Health Partnership: Edinburgh South Community Health Partnership	Local Authority: Edinburgh, City of	Health Board: Lothian	Scotland
Crime and Justice						
Number of SIMD crimes per 10,000 of the population: 2004		541				
Economic Activity, Benefits and Tax Credits						
Percentage of populations aged 16-24 claiming Jobseekers Allowance: 2005Q04	1.5	2.7	2.2	2.6	3.0	4.2
Percentage of populations aged 25-49 claiming Jobseekers Allowance: 2005Q04	0.8	1.6	2.1	2.1	2.0	2.5
Percentage of populations aged 50 to pensionable age claiming Jobseekers Allowance: 2005Q04	1.1	1.0	1.5	1.6	1.4	1.9
Total Income Support claimants.: 2006Q02	410	2800	9750	17790	29445	220750
Percentage of population aged 60 and over claiming guaranteed pension credits: 2005Q04	9.0	11.1	15.9	15.4	16.4	19.8
Percentage of population aged 16 to 19: 2005		6.3		6.9		
Percentage of population aged 20 to 24: 2005		11.5		7.6		
Percentage of population aged 25 to 49: 2005		11.1		11.5		
Percentage of population aged 50 to pension age: 2005		11.4		15.9		
Education, Skills and Training						
Number of Male pupils on the S4 roll: 2004	113	400	994	1791	3831	29505
Number of Female pupils on the S4 roll: 2004	122	435	992	1852	3855	28682
Average tariff score of Male pupils on the S4 roll: 2004	210	183	168	166	167	162

Average tariff score of Female pupils on the S4 roll: 2004	215	180	167	171	177	178
Average tariff score of all pupils on the S4 roll: 2004	212	181	168	169	172	170
Total Number of pupils in primary schools: 2005	1812	5644	13347	25148	54067	386258
Total Number of pupils in secondary schools: 2005	1360	4362	10181	19466	41850	312889
Primary percentage attendance rate: 2005	96.29	95.50	94.76	94.92	95.08	95.09
Secondary percentage attendance rate: 2005	92.79	91.59	89.68	90.06	90.47	90.29
Exclusions per 1,000 pupils: 2004		31		37		51
Health						
Low weight live singleton birth rate per 1000 live singleton births: 2002-2004	9.27	21.13	23.67	22.38	22.67	24.65
Emergency hospital admissions - both sexes - aged 65 and over - rate per 100000 population: 2005	18,505	19,516	22,229	22,574	23,096	24,337
Percentage of children breastfeeding at the 6 to 8 week review.: 2005	63.64	52.80	56.16	57.22	48.54	37.29
Percentage of women smoking at booking: 2002-2004	7.8	14.0	13.1	12.8	16.4	24.3
Depression, Anxiety: Estimated practice team annual prevalence rate - year ending 31st March: 2005		0.10		0.10		0.11
Diabetes: Estimated practice team annual prevalence rate - year ending 31st March: 2005		0.03		0.03		0.03
Percentage vaccinated against MMR by 24 months of age.: 2005	93.1	89.7	89.2	89.8	91.6	90.0
Hospital admissions for alcohol misuse - rate per 100000 population: 2001-2004	399.78	546.59	648.70	671.10	621.04	722.66
Hospital admissions for drugs misuse - rate per 100000 population: 2001-2004	84.06	133.38	159.04	173.08	141.41	127.46
Housing						
Percentage of dwellings in						

Council Tax band A: 2005	4.54	18.82	12.60	10.84	11.95	23.80
Percentage of dwellings in Council Tax bands A to C: 2005	30.91	46.71	51.00	49.41	55.91	63.76
Percentage of dwellings in Council Tax bands F to H: 2005	42.81	29.59	19.66	19.69	16.62	11.35
Total number of dwellings per hectare: 2005	3.97	3.50	7.86	8.49	2.15	0.31
Total Number of Households: 2001		30014		204683		2192246
Percentage of Households - Owned: 2001		73.62		68.57		62.59
Percentage of Households - Social Rented: 2001		19.73		17.91		29.41
Percentage of Households - Private Rented: 2001		6.65		13.53		8.00
House sales, median price: 2005		133,000		137,200		88,000
House sales, mean price: 2005	234,677	193,813	175,156	174,728	158,710	122,104
Physical Environment						
Percentage of people within 0-500 metres of any Derelict Site: 2004	3.0	4.3	12.4	8.6	17.2	27.4
Air Quality 2002-2004 - Nitrogen Dioxide concentration - Population weighted: 2002-2004	20.8	20.5	21.8	21.8	18.5	
Air Quality 2002-2004 - PM10 concentration - Population weighted: 2002-2004	14.1	14.2	14.5	14.4	14.3	
Population						
SAPE All Persons: 2005	25781	78712	240242	457830	792600	5094800
SAPE Persons 16-19: 2005	1463	5108	14366	23549	40704	263370
SAPE Child Population %: 2005	20.31	19.30	15.38	15.39	17.53	18.23
SAPE Working Population %: 2005	61.28	63.15	68.33	67.40	65.17	62.63
SAPE Pensionable Population %: 2005	18.41	17.55	16.28	17.21	17.31	19.14
SAPE Working Males: 2005	8374	25854	83563	156056	261429	1635278
SAPE Working Females: 2005	7425	23850	80601	152530	255069	1555575

Colinton/Fairmilehead ward – future developments

Planning proposals arrive in two forms: those defined in the Development Plan as opportunities for development; and, speculative proposals which have not been defined. Both can form the basis for planning applications, and just because a piece of land has been defined as suitable for a particular use, say housing, does not mean that an application for housing will be any less contentious. Below are listed the major development opportunities as defined in the city's Local Plans.

Information on current planning applications can be accessed at www.edinburgh.gov.uk/planning. From this portal you can access information on the planning system (policy documents and guidance) and search for application by address, application reference, ward, date and on a map.

HOUSING

- **Firrhill Drive (Canmore Housing Association Ltd)** – 91 units allocated
- **Frogston Road West (Bryant Morrison Residential Ltd)** – 123 units allocated, 122 completed

NON-HOUSING

- **Land to east of Swanston Road** – new golf course and practice facilities. Consent granted.
- **Bonaly Grove** – new primary school on site of existing Bonaly Primary School. Consent granted.

HOW TO INTERPRET THE SCOTTISH INDICES OF MULTIPLE DEPRIVATION (SIMD) DATA MAPPED IN THE AREA PROFILES

The SIMD is the Executive's official tool for identifying small area concentrations of multiple deprivation across all of Scotland and is relevant to policies aimed at tackling the causes and effects of area based multiple deprivation.

SIMD 2006 divides Scotland up into 6,505 small geographical areas (called 'data zones'), with a median population size of 769. These are ranked from 1 (most deprived) to 6505 (least deprived) using 37 indicators of deprivation across seven categories or domains: current income, employment, health, education, geographic access to services, housing and crime.

Employment Domain:

The employment domain is a measure of 'exclusion from the world of work' and identifies the proportion of the working age population who are unemployed or are not involved in the labour market due to ill health or disability.

- Unemployment Claimant Count averaged over 12 months
- Working age Incapacity Benefit recipients
- Working age Severe Disablement Allowance recipients
- Compulsory New Deal participants - New Deal for the under 25s and New Deal for the 25+ not included in the unemployment claimant count

Housing:

The domain is intended as a direct measure of material living standards. It is currently in the early stages of development but it is intended that in the long term, it should focus on direct measures of inadequacy of housing, covering physical conditions, suitability and security of tenure.

- Persons in households which are over-crowded
- Persons in households without central heating

Geographic Access:

This domain is intended to capture a set of problems which operate at area level and which are seen by many as important in their own right. These are the problems (financial cost, time and inconvenience) of having to travel a relatively long distance to access basic services. The domain measures aspects of access deprivation that are relevant to all people since it is important to be able to access key local services in both rural and urban areas.

- Drive time to GP
- Drive time to shopping facilities
- Drive time to petrol station
- Drive time to primary and secondary schools
- Drive time to post office
- Public transport time to GP
- Public transport time to shopping facilities
- Public transport time to Post Office

Health Domain:

The domain is intended to identify areas with higher than expected levels of ill health or mortality given the age / sex profile of the population. There is currently no source available which can directly measure ill-health at the small area level and can be regularly updated. The concept is therefore measured indirectly by indicators which are correlated with or are risk factors for ill-health.

- Standardised Mortality Ratio
- Hospital episodes related to alcohol use
- Hospital episodes related to drug use
- Comparative illness factor
- Emergency admissions to hospital
- Proportion of population being prescribed drugs for anxiety, depression or psychosis
- Proportion of live singleton births of low birth weight

Crime Domain:

The SIMD crime domain measures the rate of recorded SIMD crime at small area level using 2004 recorded crime data and is based on five indicators of broad crime types: crimes of violence; drug offences; domestic house breaking; minor assault; and vandalism. The indicators used were chosen on the basis of relevance to impact on the local neighbourhood and availability of data. The crime domain score is a sum of the recorded crimes in each of the indicators and is referred to as 'SIMD crime' rather than total crime, as it does not include all recorded crimes.

- Domestic house breaking
- Drug offences
- Minor assault
- Crimes of violence
- Vandalism

Education, Skills and Training Domain:

The Education, Skills and Training domain focuses on low educational achievement as both an outcome and a cause of poverty and deprivation.

- School pupil absences
- Pupil performance on SQA at stage 4
- Working age people with no qualifications
- 17 - 21 year olds enrolling into full time higher education
- School leavers aged 16-18 not in education

The above information is extracted from the: Scottish Indices of Multiple Deprivation 2006: Technical Report. For further details please see:

<http://www.scotland.gov.uk/Resource/Doc/933/0041180.pdf>